



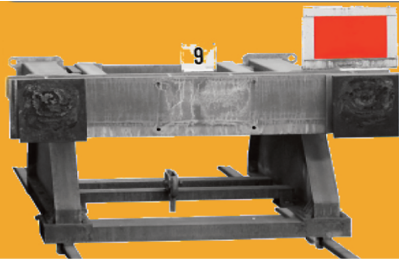
Prellbock Altona

Unser Bahnhof bleibt, wo er ist!

**Prellbock-Altona = the Local Initiative for keeping
Long-Distance and Regional Train Station Hamburg-
Altona in its present position
was set-up in March 2015**

www.prellbock-altona.de

Michael Jung, Spokesman of Prellbock Initiative, Hamburg, Oct. 2018

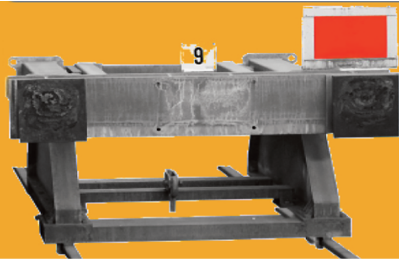


Prellbock Altona

Unser Bahnhof bleibt, wo er ist !

Altona relocation project as planned by DB AG:

- Closure of Altona long-distance and regional train terminus station incl. car/sleeper loading facilities; barrier free station building abandoned
- Relocation to Diebsteich, 2 km northward, side to side to cemeteries, allotment gardens, industrial estate, no car loading facilities feasible
- New station with only 6 tracks (instead of 8 at existing station) shall handle 60% more traffic; no space for future expansion
- 2 high-rise buildings for hotel and offices to be constructed by private investors with entrance hall functioning as station building, low standard platform roofs
- Break-up of well functioning public traffic-node of bus, S-Bahn, regional and long-distance trains at existing Altona Station
- 6 yrs. construction time, with a lot of disturbances of train traffic from and to Hamburg
- No real participation of affected citizens in decision making process
- Extended commuter time of >+10 minutes for approx. 30.000 commuters



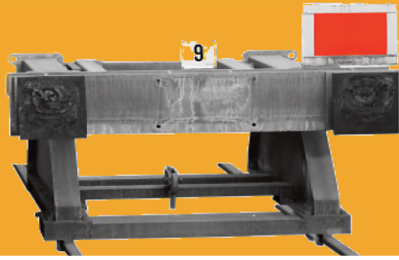
Prellbock Altona

Unser Bahnhof bleibt, wo er ist !

Prellbock Initiative's targets:

- Maintaining long-distance and regional train-station at its present location with full functionality incl. night+car-sleeper-trains



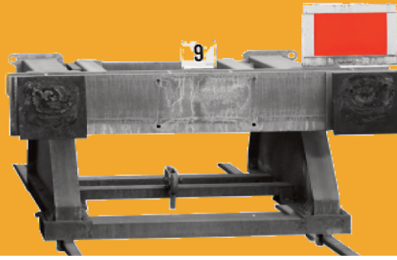


Prellbock Altona

Unser Bahnhof bleibt, wo er ist !

- No demolition of car-sleeper-train loading facilities, expansion of night-train traffic



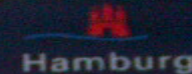


Prellbock Altona

Unser Bahnhof bleibt, wo er ist !

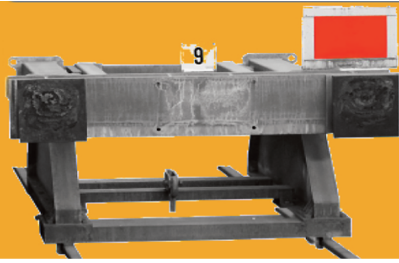
Altona station is an integral and well-accepted part of the city centre of Hamburg-Altona. It fulfills all of the social functions defined by the City Authorities for Hamburg Main-Station.

Hauptbahnhof – Schnittstelle für Hamburg



Behörde für Wirtschaft,
Verkehr und Integration

- Ort für ankommende und abfahrende (Bahn-)Reisende
- Zentrale Umsteigestation Bahn, Fernbus, U-Bahn, Bus
- Passage zwischen der Innenstadt und St. Georg
- Verbindung zum Hafen für Kreuzfahrtreisende
- Vorplatz für Theaterbesuchende (Schauspielhaus, Ohnsorg-Theater)
- Abschnitt der Kunstmeile
- Visitenkarte und Identifikationsort für Hamburger und Touristen
- Ort öffentlicher Kundgebungen (u. a. Demonstrationen, Infostände)
- Kommunikations- und Aufenthaltsort
- Spannungsfeld zwischen wirtschaftlichen Interessen und sozialen Notlagen



Prellbock Altona

Unser Bahnhof bleibt, wo er ist !

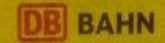
- **Altona still offers attractive - although compared to 15 years ago reduced - departures**

Abfahrt Departure
Hamburg-Altona

Abfahrtsort	Zielterminal	Ankunft	Wagen	Verladezeit	Check Inn	Zug-Nr.
20:35	Wien Westbf.	08:44	11	20:05-20:05	17:30 - 20:00	EN 491
21:32	Lörrach Gbf	07:05	10	20:02 - 21:15	17:30 - 21:15	1499
22:55	München Ost	07:32	11	21:25 - 22:40	21:15 - 22:40	1497

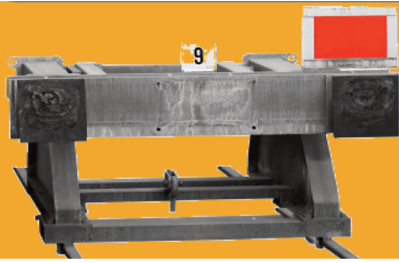
Autozug Abfahrt

Terminal: Hamburg-Altona



Diese Zeiten gelten für alle Abfahrten vom 05.12.2015 - 08.12.2016

Abfahrt	Zielterminal	Ankunft	Wagen	Verladezeit	Check Inn	Zug-Nr.
20:35	Wien Westbf.	08:44	11	20:05-20:05	17:30 - 20:00	EN 491
21:32	Lörrach Gbf	07:05	10	20:02 - 21:15	17:30 - 21:15	1499
22:55	München Ost	07:32	11	21:25 - 22:40	21:15 - 22:40	1497



Prellbock Altona

Unser Bahnhof bleibt, wo er ist !

- Altona Station is a lively centre of the surrounding city quarters at the junction of 2 shopping malls with excellent barrier free accessibility and short distances

Abfahrt/Departure			
10:05	Kassel-Wilhelmshöhe	München Hbf	10
10:14	Kassel	Karlsruhe Hbf	8
10:19	Kassel	Innsbruck Hbf	12
10:37	Köln - Berlin Hbf	Berlin Südkreuz	11
10:40	Köln - Itzehoe	Westerland Sylt	9
10:46	Kassel-Wilhelmshöhe	Stuttgart Hbf	10
10:56	Prinzeberg - Eichenh.	Wist	8
10:57	Essen - Düsseldorf	Köln Hbf	9
11:05	Kassel-Wilhelmshöhe	München Hbf	11
11:21	Berlin Hbf	Berlin Südkreuz	12
11:55	Prinzeberg - Eichenh.	Wist	8
12:08	Eichenh. - Itzehoe	Westerland Sylt	9

Berlin • London • Vienna • Munich • Hamburg • Cologne • Frankfurt

MEININGER
The urban traveller's home.

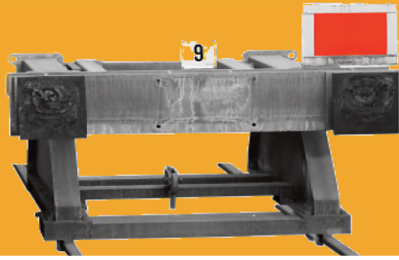
SINGLE/TWIN from **49€** per room

DORMITORY **15€** per bed

Hotel 400 m
Goetheallee 11

Max Brauer Allee

www.meininger-hotels.com • +49 (0)40 / 414 31 40 08

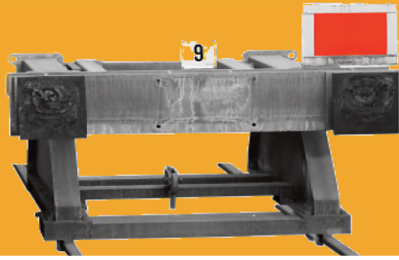


Prellbock Altona

Unser Bahnhof bleibt, wo er ist !

- Altona station as terminus station offers excellent boarding conditions für elderly and handicapped travellers, families, school classes, travellers with bulky luggage and bikes etc.



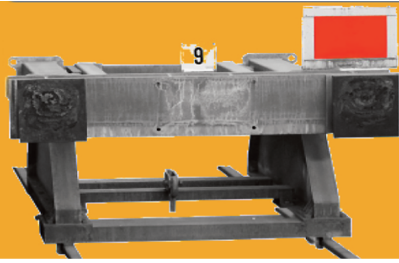


Prellbock Altona

Unser Bahnhof bleibt, wo er ist !

- Altona station suffers from a lack of maintenance for years. A comprehensive rehabilitation of technical installations with additional platform access pathes is inevitable.



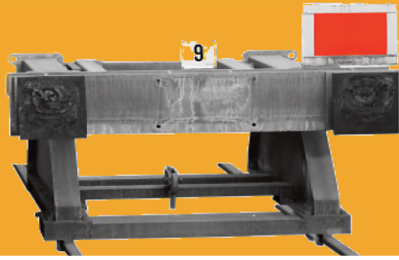


Prellbock Altona

Unser Bahnhof bleibt, wo er ist!

Old railway subways must be urgently renovated. New access from here to the platforms above



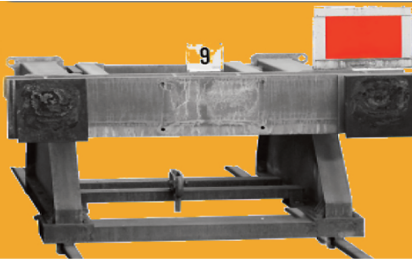


Prellbock Altona

Unser Bahnhof bleibt, wo er ist !

Areal view of railway land to be abandoned and planned to be used for housing



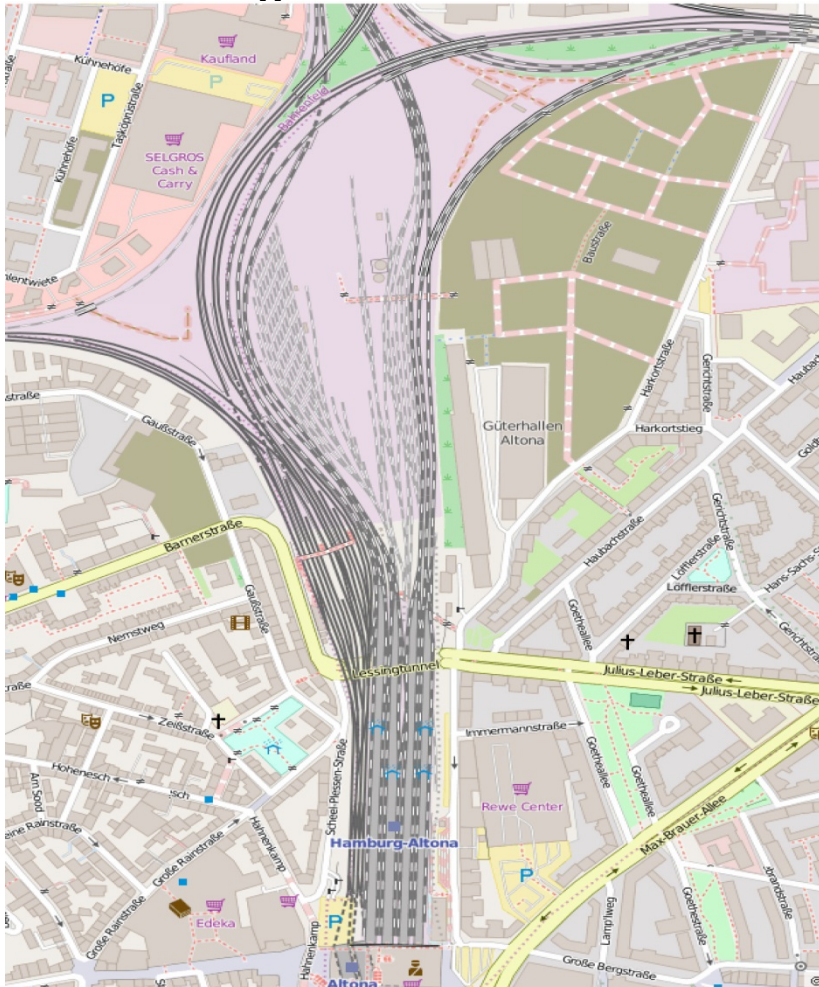


Prellbock Altona

Unser Bahnhof bleibt, wo er ist !

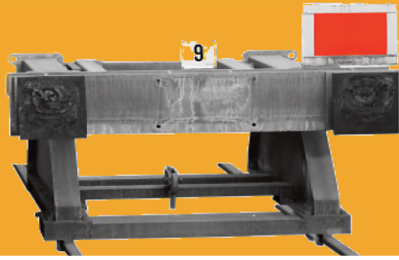
Re-arrangement of tracks proposed by Prellbock vacates space for housing

Existing tracks



Proposed re-arrangement



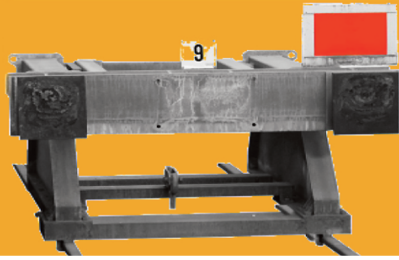


Prellbock Altona

Unser Bahnhof bleibt, wo er ist !

- Old bridges, stabling tracks, fueling facilities and old steam locomotive water tower to be removed to create space for housing projects



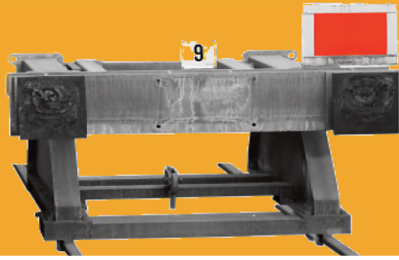


Prellbock Altona

Unser Bahnhof bleibt, wo er ist !

- **Modernisation of existing facilities allows start of urgently needed housing project „Neue Mitte Altona II“ up to 4 years earlier.**



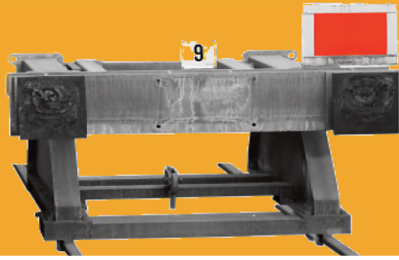


Prellbock Altona

Unser Bahnhof bleibt, wo er ist !

- Noise protection walls have to be built alongside main-line as well S-Bahn tracks



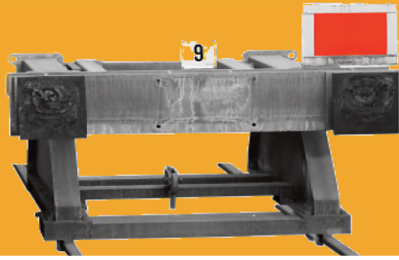


Prellbock Altona

Unser Bahnhof bleibt, wo er ist !

- Old railway foot and bicycle underpaths have to be renovated and upgraded



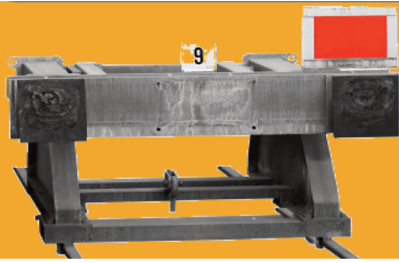


Prellbock Altona

Unser Bahnhof bleibt, wo er ist !

- **Soft skills: A station has to create emotions and should attract future railway customers.**





Prellbock Altona

Unser Bahnhof bleibt, wo er ist !

Our concept at a glance:

- **Maintaining Altona Terminus Station at its present location including car/sleeper train loading facilities.**
- **Rearrangement of tracks, demolition of obsolete railway installations, modernization of platforms.**
- **Rehabilitation of the railroad underpath „Lessingtunnel“ creating new access stairs /escalators to the 4 platforms above in order to shorten access to the trains.**
- **Immediate start of the planning process for the housing project „Neue Mitte Altona 2“ .**
- **Comprehensive participation of citizens and local business into the planning process for the modernisation of Altona Terminus Station.**